



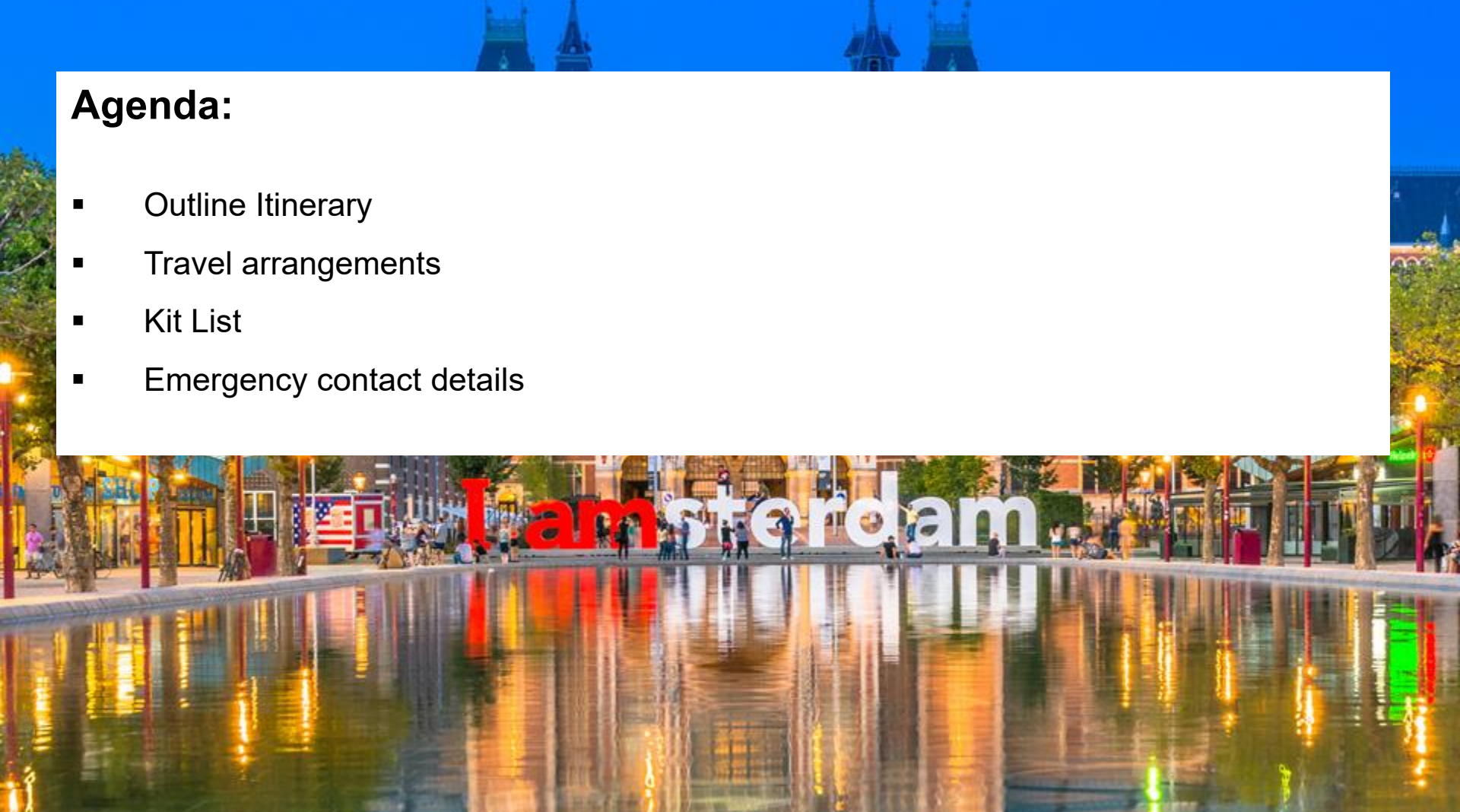
SHSB Science Department

Amsterdam, Netherlands

16 May – 19 May 2026

Agenda:

- Outline Itinerary
- Travel arrangements
- Kit List
- Emergency contact details



Members of Staff

1. Mr D Hill *Trip Leader, Leader of Science*
2. Miss C Sandford *Teacher of Maths*
3. Mrs C Beetar *Senior Science Technician*
4. Dr S Ross *Learning Support Assistant*

Travel Arrangements

Saturday 16th	0330	Arrive at school to load the coach
	0400	Depart SHSB (front bus stops)
	0545	Arrival, Heathrow Airport
	0840	Departure, KL1002 (KLM)
	1100	Arrival, Schiphol Airport
Tuesday 19th	1905	Departure KL1015 (KLM)
	1925	Arrival, Heathrow Airport
	2200	Arrival SHSB (front bus stops)

DAY 1

SATURDAY 16th MAY



03:30 Arrive at school – front bus stops

BRING PASSPORTS

04:00 Depart School and travel by coach to Heathrow

05:45 Arrive at the terminal and check in

08:40 Departure KL1002

11:00 Arrival Schiphol

12:30 Arrive at accommodation, check in and drop luggage

15:45 60 min Stromma Canal Cruise

19:00 Dinner at hotel

Canal cruise

Amsterdam's network of canals is without a doubt its most famous feature, so hop aboard a boat and see the city from the water.

You will learn about Amsterdam's history, including how it was built and the story behind some important buildings.



Accommodation

Stayokay Amsterdam Oost
Timorplein 21,
1094 CC Amsterdam
+31 (0)20 551 31 90

Rooming will be allocated in
a final pupil-briefing approx.
1 week before departure in
school.

We cannot guarantee
rooming arrangements or
requests.



DAY 2

SUNDAY 17th MAY

Efteling Theme Park

Holland's largest theme park – a Fairy Tale themed park set in a forest. It's twice as large as the original Disney Land in California

- 08:00** Breakfast at hotel
- 09:00** Coach depart hotel
- 12:30** *Efteling* theme-park
- Lunch** *(students purchase their own)*
- 17:00** Coach depart *Efteling*
- 19:00** Dinner at hotel



DAY 3

MONDAY 18th MAY

Anne Frank's House

Jewish Anne Frank hid in 1942 from the Nazis during the occupation of the Netherlands. Two years later she was discovered. In 1945 she died in the Bergen-Belsen concentration camp.

08:00 Breakfast at hotel

09:00 Walk to *Micropia*

10:00 *Micropia*

Lunch (*students purchase their own*)

13:00 *Bodyworlds*

15:30 Anne Frank's House

19:00 Dinner at hotel



→ AMSTERDAM

Micropia

The only museum of its kind, displaying the invisible world of micro-organisms.

When you look from really close, a new world is revealed to you.



Bodyworlds

This exhibition will show how your everyday choices impact your happiness and health with plastinated but real human bodies.



DAY 4

TUESDAY 19th MAY



- 08:00** Breakfast, pack & check-out
- 09:00** Coach depart hotel
- 09:00** Arrival at *Corpus Museum*
- Lunch** (*students purchase their own*)
- 13:30** Arrival at *Naturalis Biodiversity Center*
- 15:35** Coach depart to Airport
- 16:00** Arrive at the terminal and check in
- 19:05** Departure KL1015
- 19:25** Arrival Heathrow
- 22:00** Arrival at School (front bus stops)

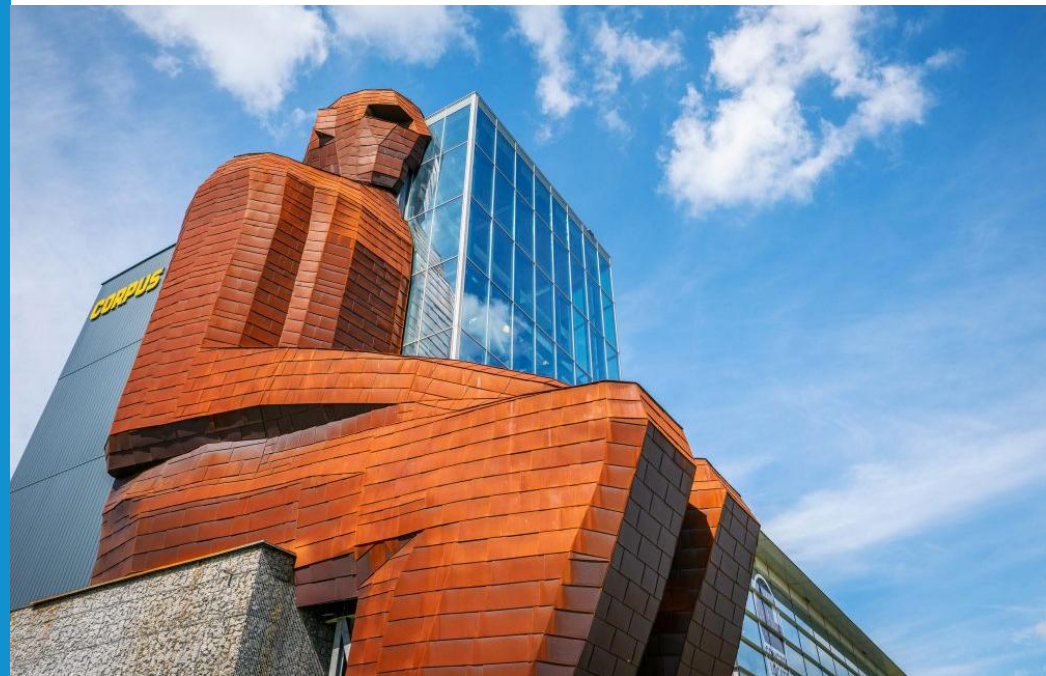
→ AMSTERDAM

Naturalis Biodiversity Centre

The stories in the museum are told using outstanding pieces in a collection of 42 million plants, animals, fossils and rocks.

Corpus Museum

How does your body react to a splinter? What happens in your ear when you listen to music? And where is the command centre of your body? Take a spectacular 'journey through the human body' and see, feel and hear how our ingenious body works.



Passports & Other Matters

Passports will be held by staff for the duration of the trip apart from when passing through border control.

If you hold a British Passport, it must meet two requirements. It must be:

- less than 10 years old on the day you enter (check the date of issue)
- valid for at least 3 months after the day you plan to leave (check the expiry date)

EHIC and/or GHIC cards are still valid for use within the EU however the school's travel insurance will cover medical treatment.

School insurance will not cover loss of significant personal possessions – e.g. iPads, phones etc. Personal possessions brought on the trip are the sole responsibility of pupils.

Kit List

Medications,
2 x EpiPens &
Inhalers

- ✓ **Accommodation:**
 - Bed linen provided
 - Please bring your own towels and toiletries
 - Non-school uniform, but respectful clothing for public places

- ✓ **Meals**
 - Breakfast and dinner are provided in the hostel.
 - Lunch is to be purchased while out in Amsterdam
 - €10 provided for lunch, per meal.
 - Please avoid bringing food and snacks with nuts

- ✓ **Spending Money**
 - All meals have been budgeted for including lunch (outward) and dinner (inward) but pupils may wish to bring a small amount of money for gifts, souvenirs and supplementary snacks & drinks.
 - Pupils may leave in a safe box

Emergency Contact Details

School Mobile: +447981770404
 +447545211623

(Emergencies only please – not just because your son is ignoring you!)

Accommodation: Stayokay Amsterdamm Oost
 Timorplein 21,
 1094 CC Amsterdam,
 Netherlands
 Tel: +31 20 551 3190

General queries: enquiries@shsb.org.uk

Thank You

I'm happy to answer any of your questions

Before you go;

1. Ensure that we have taken copies of your son's passport and EHIC/GHIC card (if he has one).
2. Please speak to me privately if you have any concerns regarding medical conditions.
3. **Please fill out the consent and medical information form (emailed Tuesday morning, return by Friday 20th March)**